



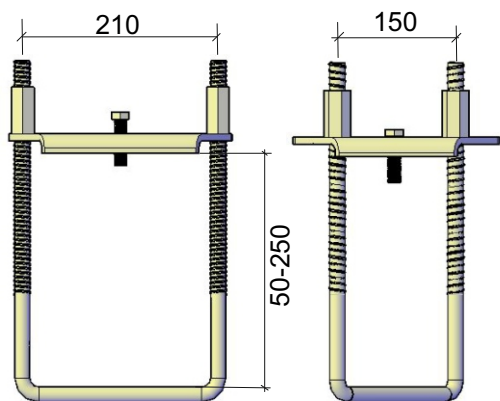
TECHNICAL DATA SHEET

UNIVERSAL FORMWORK ATTACHMENT.

Description:	TSS UNIVERSAL FORMWORK ATTACHMENT
Article No.:	TSUFWATTG
Weight:	4.1 kg
Finish:	Electroplated

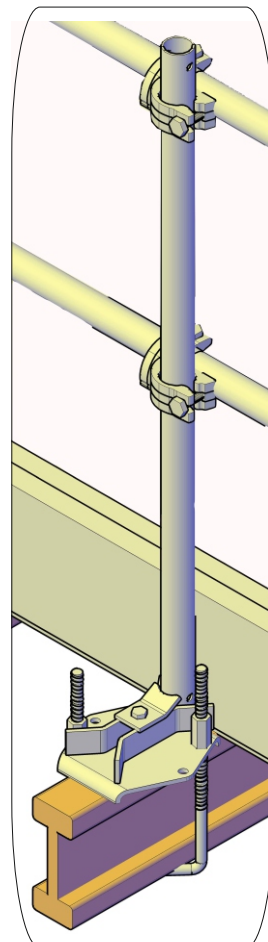
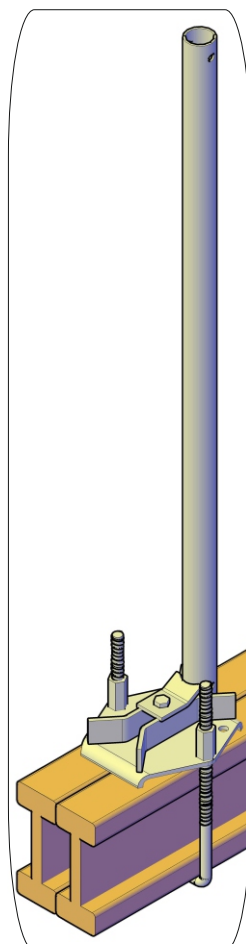
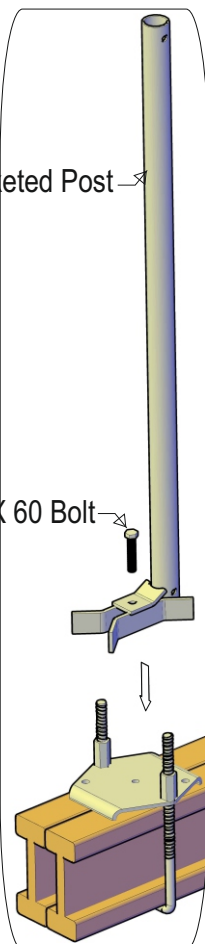
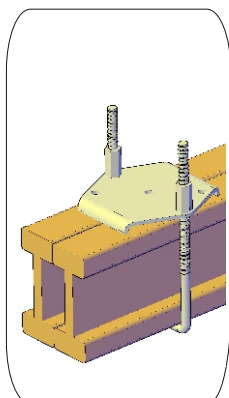
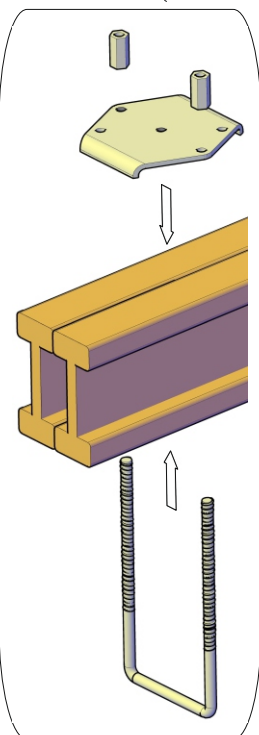
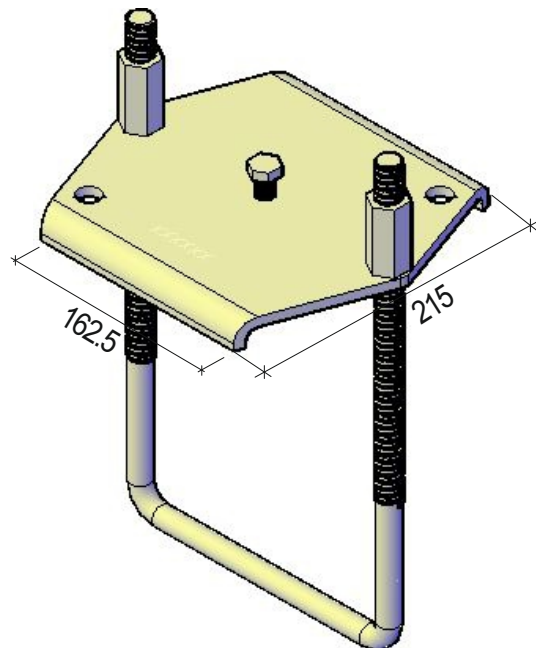
Article No.	Description	Qty	Weight
TSUFWATTGUB	U-Bolt H20 EP	01	1.6 kg
TSUFWATTGCP	Clamping Plate H20 EP	01	2 kg
TSUFWATTGHN	Clamp H20 Hex.Nut EP	02	0.25 kg x 2
BTM1260	M12x60 Bolt	01	0.022 kg

EN Standard: EN 13374 Class A



TS Socketed Post

M12 X 60 Bolt

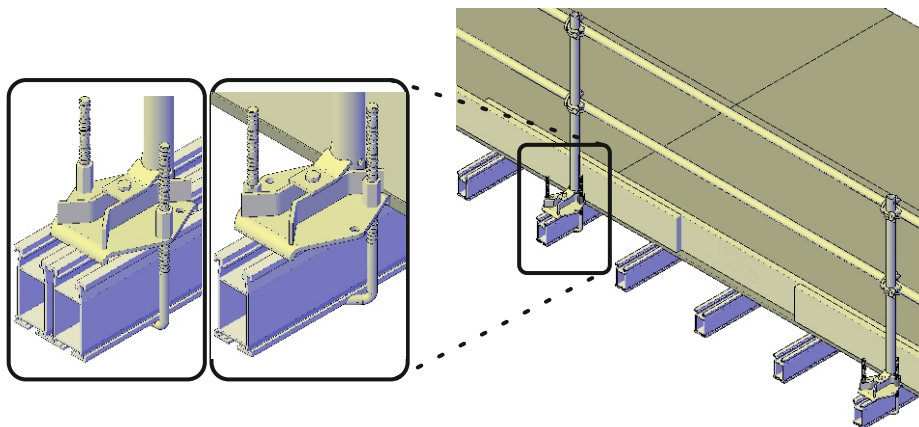




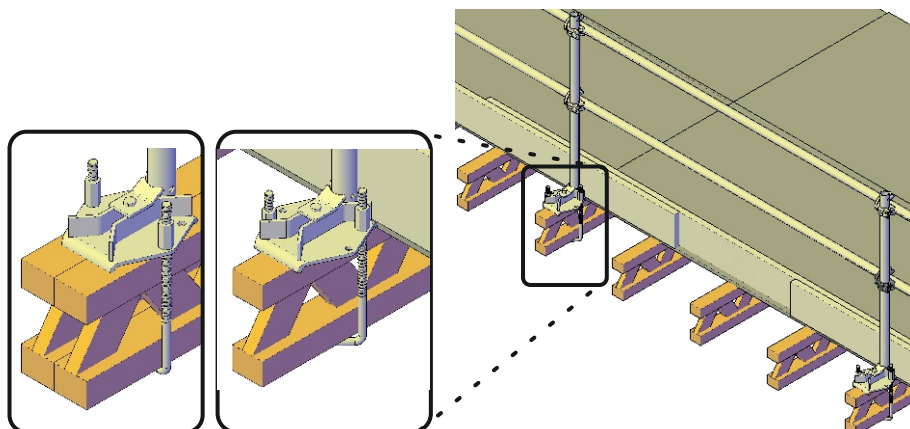
TECHNICAL DATA SHEET

UNIVERSAL FORMWORK ATTACHMENT.

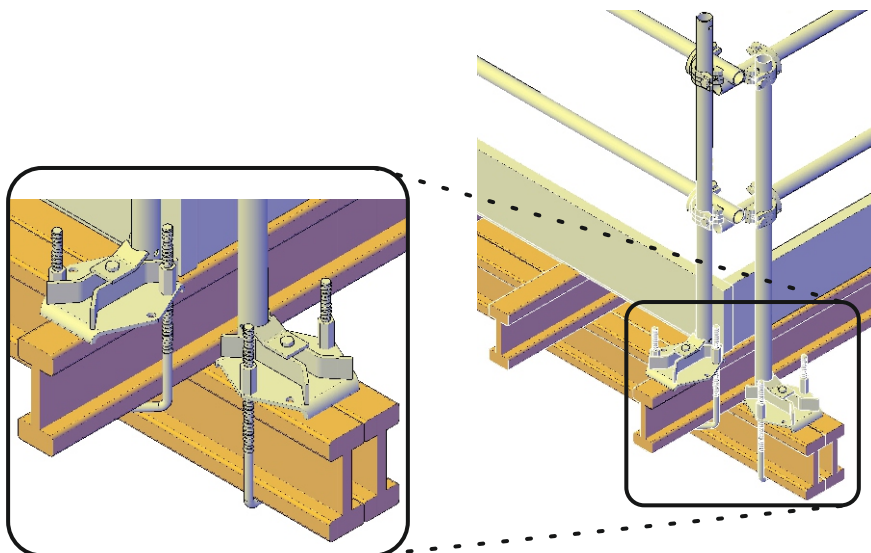
Formwork Application



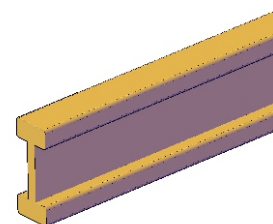
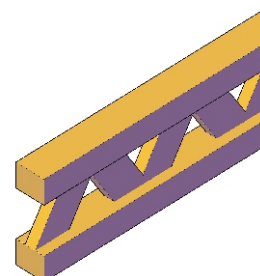
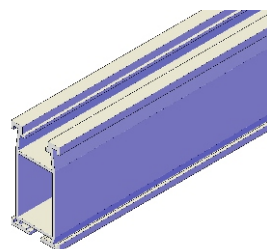
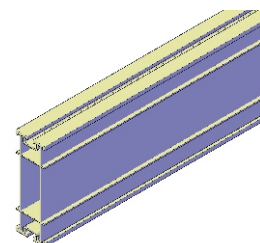
Using Aluminium Beams



Using Timber Beams G24
(with Socketed Post Edge Protection)



Using Timber Beams H20
(with Socketed Post Edge Protection)



Note:

- All personnel **MUST** wear appropriate PPE and fall protection equipment when working at height.

- All personnel **MUST** be trained on working safely at height and correct use of Fall Protection equipment.

